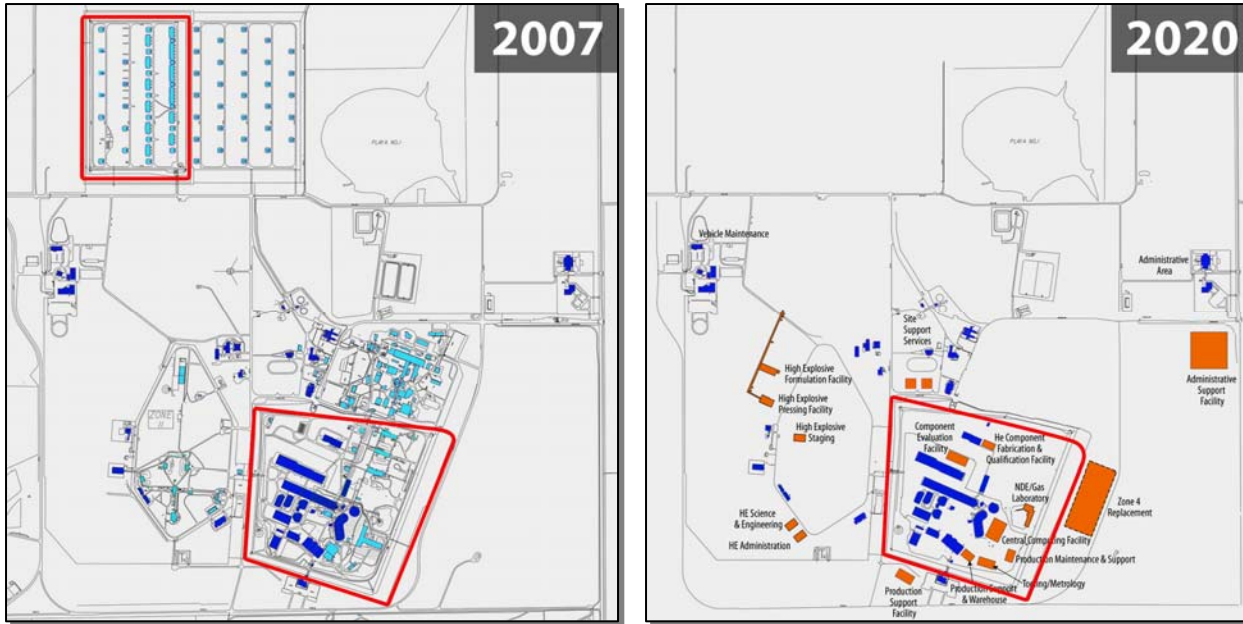


Pantex Plant



■ Existing now; gone in future ■ Existing now and in future ■ New in future

Transformational Changes

- Special nuclear material consolidated, enabled by Zone 4 closure
- 45% reduction high security perimeter
- 25% reduction total building footprint
- Over next decade or so, up to 5% to 10% fewer staff supporting nuclear weapons activities. These reductions are expected through natural attrition and transfer of personnel to other positions supporting essential national security needs.

Center of Excellence for Assembly/ Disassembly; High Explosives (HE) Production & Machining will be enhanced by:

- Non-destructive weapon/ pit surveillance with existing Weapons Engineering and Testing Lab (WETL) and new Weapons Surveillance Facility (WSF)
- Updated HE machining and production facilities
- Weapon and pit storage with new underground Zone 12 storage facility